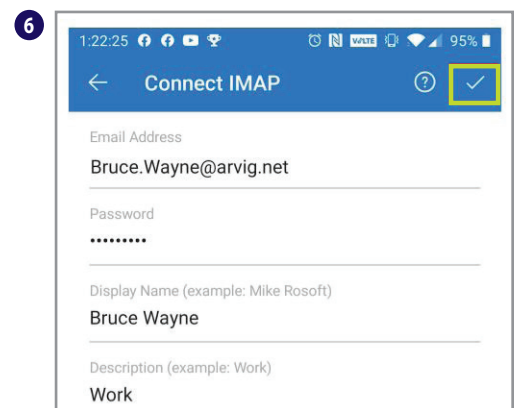
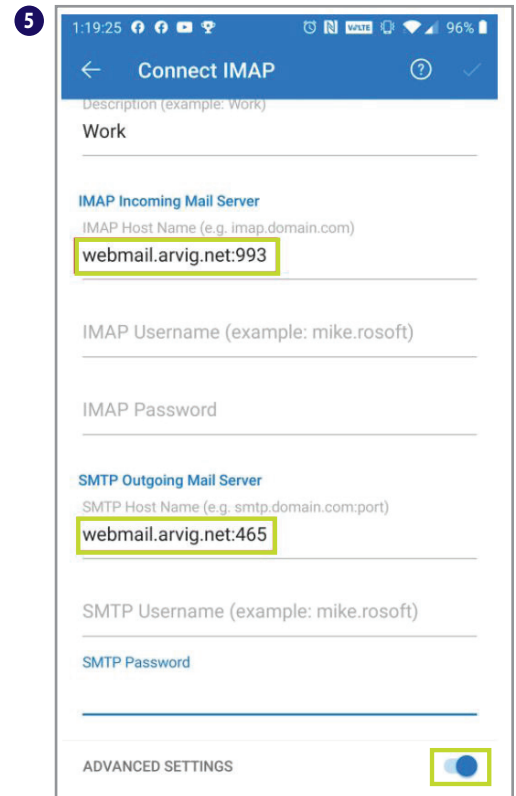
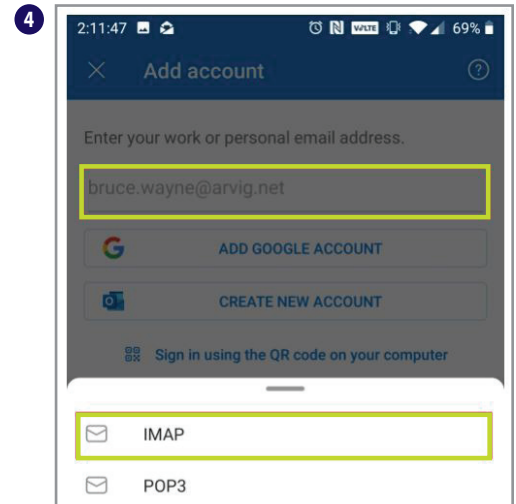
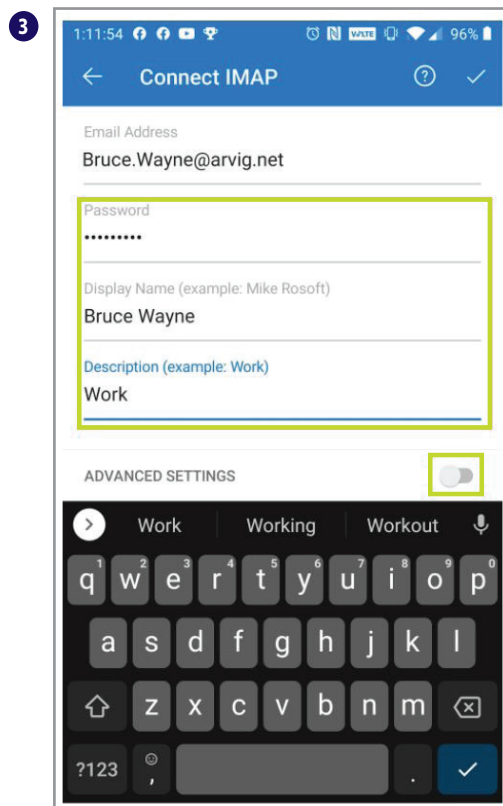
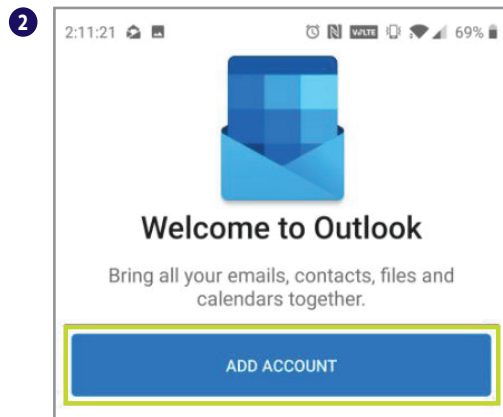
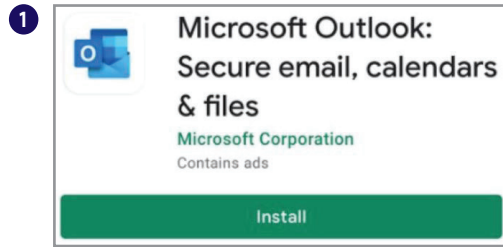


# SET UP ARVIG WEBMAIL through Microsoft Outlook for Android

- 1 Visit Google Play on your device; download and install Microsoft Outlook.
- 2 Open the app, and you'll be prompted to Add Account.
- 3 Enter your full email address, then select IMAP.
- 4 Enter your Password, Display Name and Description (recommended if you have multiple emails), then tap Advanced Settings.
- 5 Enter the settings for IMAP Incoming Mail Server and SMTP Outgoing Mail Server as pictured. Tap Advanced Settings again when done.
- 6 Tap the check mark in the upper right corner to finish setup.



888.99.ARVIG | [arvig.net](http://arvig.net)